

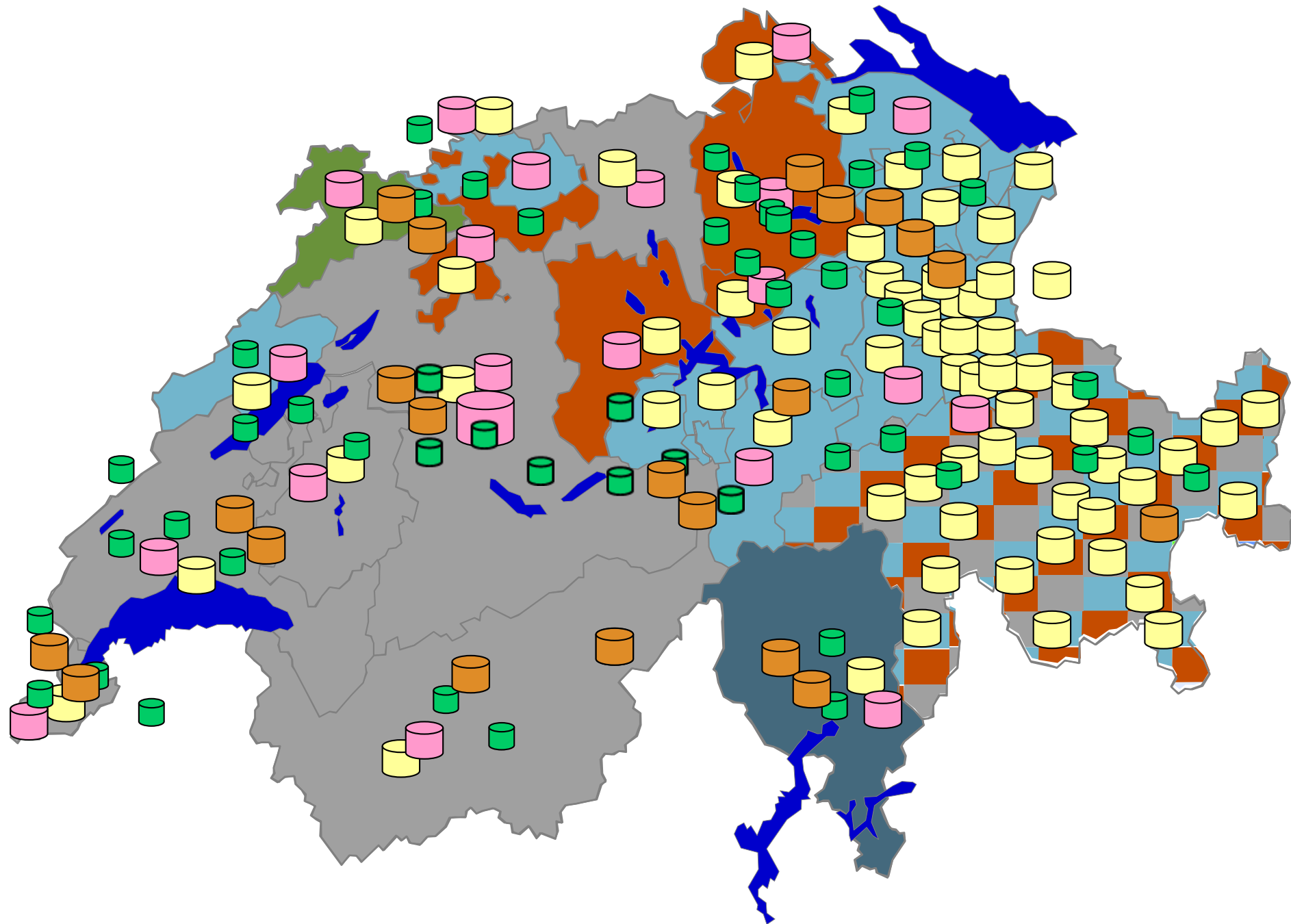
Using Metric Time-Lines for Identifying Architecture Shortcomings in Process Execution Architectures

SAM @ ICSE 2015
Florence, 2015-05-16



Daniel Lübke

Terravis - Process Integration across Switzerland



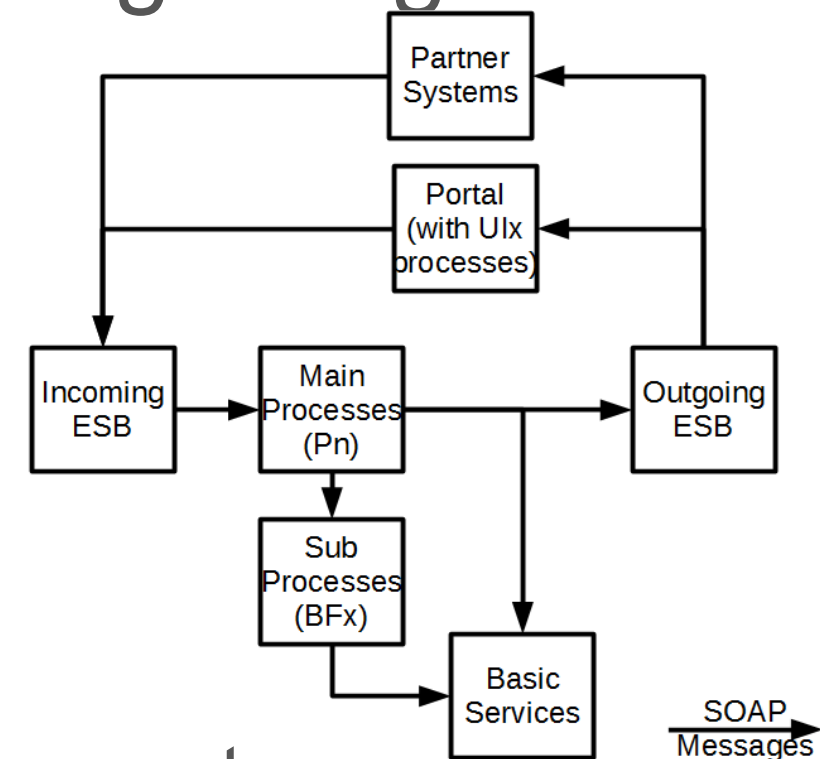
Project Evolution

- > Iterative Development over 4 years (cont.)
- > High-Level Architecture from the beginning:

- > Multiple concurrent service versions
- > Access via Portal vs. Integration

- > New Features

- > Functionality
 - > Processes, Variants, Mortgage Management, ...
- > Multi-Channel Access
- > Legal Constraints

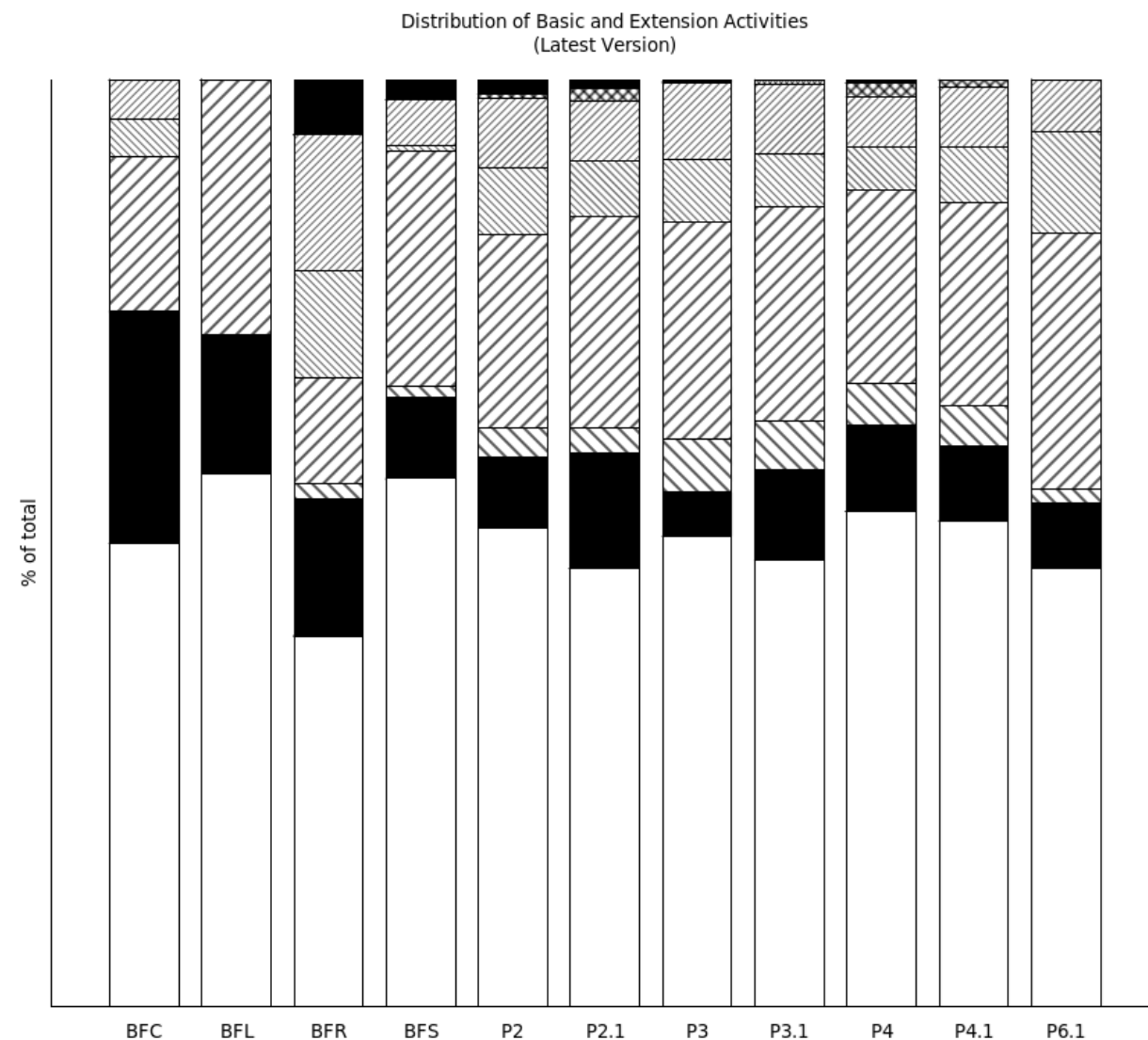
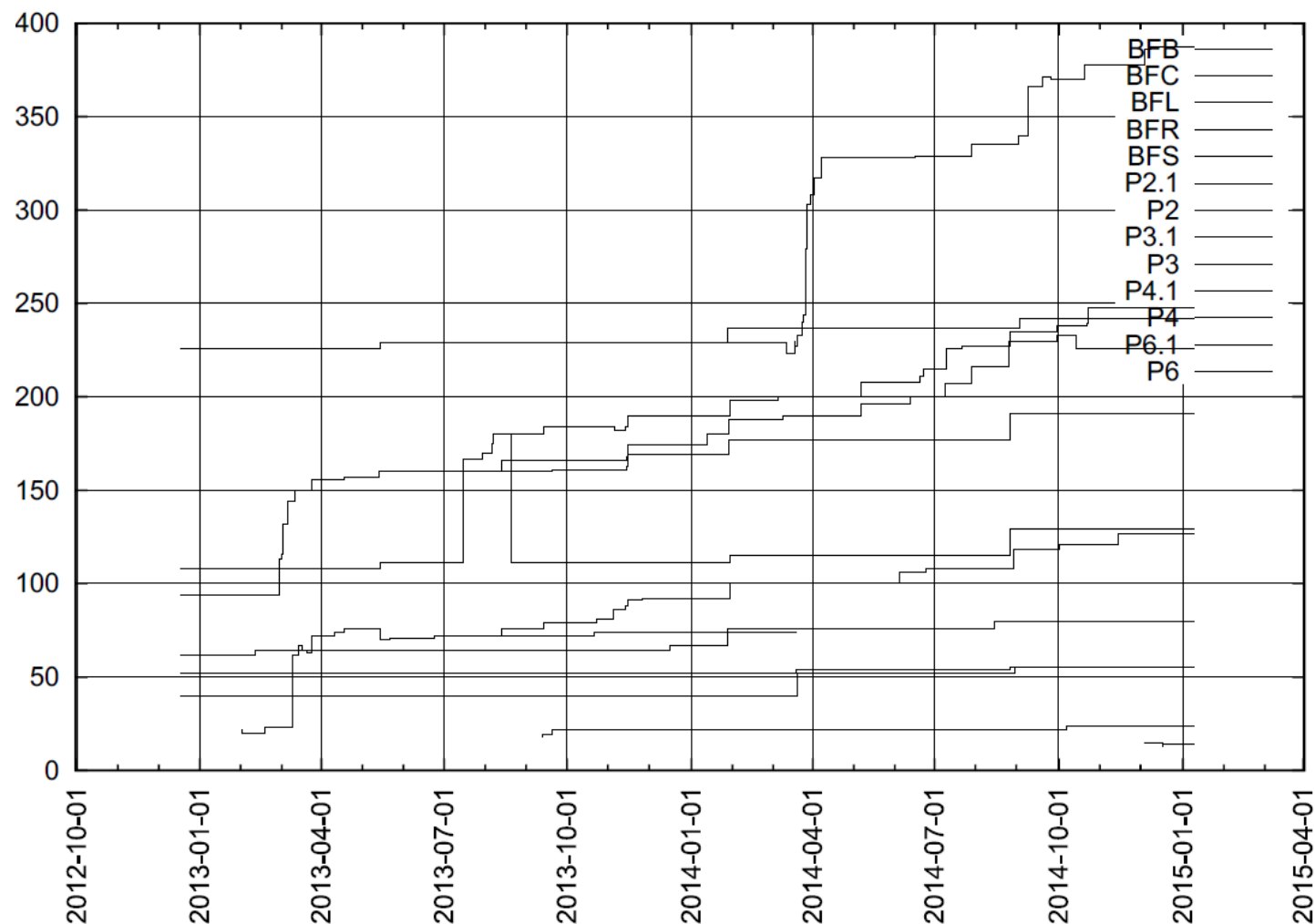


Problems

- > Iterative Development over 4 years (cont.)
 - > Much Functionality/Complexity
 - > Unforeseen Architecture Components
 - > Technical Debt, especially:
 - > Tools getting slower (Increasing Process Size)
 - > “Forgotten” Clean Up (e.g. Zombie Processes)
 - > Constraint Violations (e.g. Human Tasks)

Activity Counts/Timelines

- > Easy (= simple to calculate) Metrics
- > Explain a lot more than LOC





Thank you!

Dr. Daniel Lübke
daniel.luebke@innoq.com
@dluebke

<http://www.innoq.com>